

orchard access road

160' est

4" inspection port

pipes about 5.5 feet deep

200'

Flush Pit

2-4X4 tees

3-6X4 tees

5-8X4 tees

18'

4" IPS Pipe

4" flush valve

0.5% down slope

4" perf drain pipe,
2 feet apart

drain pipe fittings

82' est.

0.75% down slope

8"

CONSTRUCTION NOTES:

1. IPS PVC pipe and fittings are used to feed the gallery. The drain pipes and tees at the end are sewer fittings. At the flush valves the pipe is converted back to IPS PVC.

2. Gallery pipe is 4", JM Eagle PVC ASTM D2729 solvent weld drain pipe. Perforations for pipe are two rows of holes 1/2" in diameter on 5" centers and 120 degree angle apart.

3. Place each pipe 2 feet apart on center and with the holes up.

4. Screen box is 3 feet wide, 6 feet long and 1 foot deep per CTC drawing attached.

5. Flush pit is earthen and deep enough so that the flush pipe daylights in the pit. Sediment accumulated in the flush pit can be removed using a front end bucket. Initial flushing is suggested at startup, middle and end of infiltration season.

6. Buried PVC pipe needs to be bedded with gravel or soils with no rocks larger than 2 inches.

7. Position screen box so that air vent is on north side of access drive.

top of pipe about 3' deep

gravel access road

air vent/vac
flow meter

8" valve

screen box

ditch

ditch

pump

PLAN VIEW

not to scale



FOR REVIEW

DATE
8/12
9/12

DESIGN
jaf

DRAWN
jaf

CHECKED
jaf

APPROVED
jaf

TITLE

File: InfGalleries.dwg

FAZIO ENGINEERING
P.O. BOX 246
MILTON-FREEWATER, OR 98762
(541) 938-6084

SITE LAYOUT
Anspach Recharge
MILTON-FREEWATER, OR

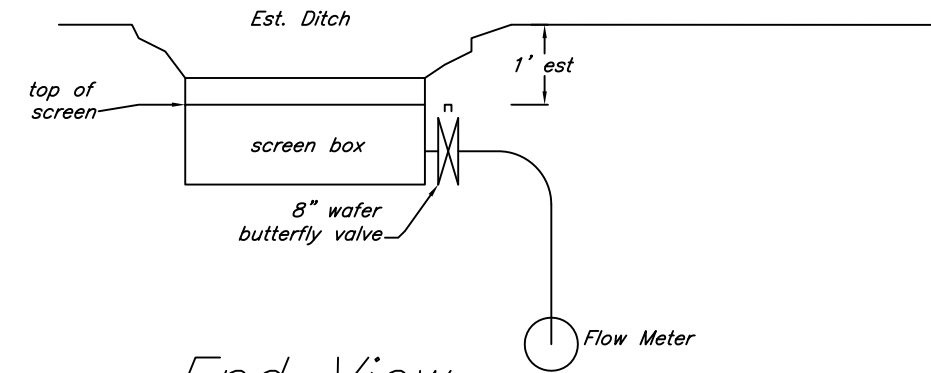
SHEET
1 OF 2

CONSTRUCTION NOTES:

1. The gallery requires 2,000 feet of drian pipe as noted. Cover drain pipe about 2" with gravel, with drain holes up.

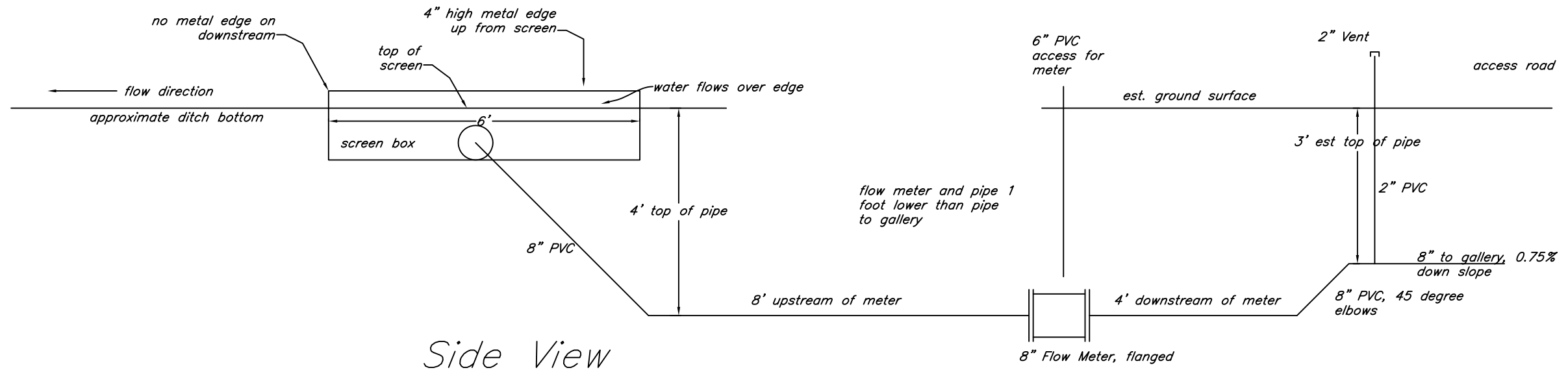
2. Proposed gravel material is 1-1/2" to 3/4" "Switch Yard", Koncrete Industries, or similar angular crushed rock with minimal fines. About 272 yards needed assuming 24' X 204' X 1.5' volume.

3. Filter fabric is a nonwoven geotextile, Mirafi MSCAPE or equivalent. About 544 square yards required, assume 24' X 204'.

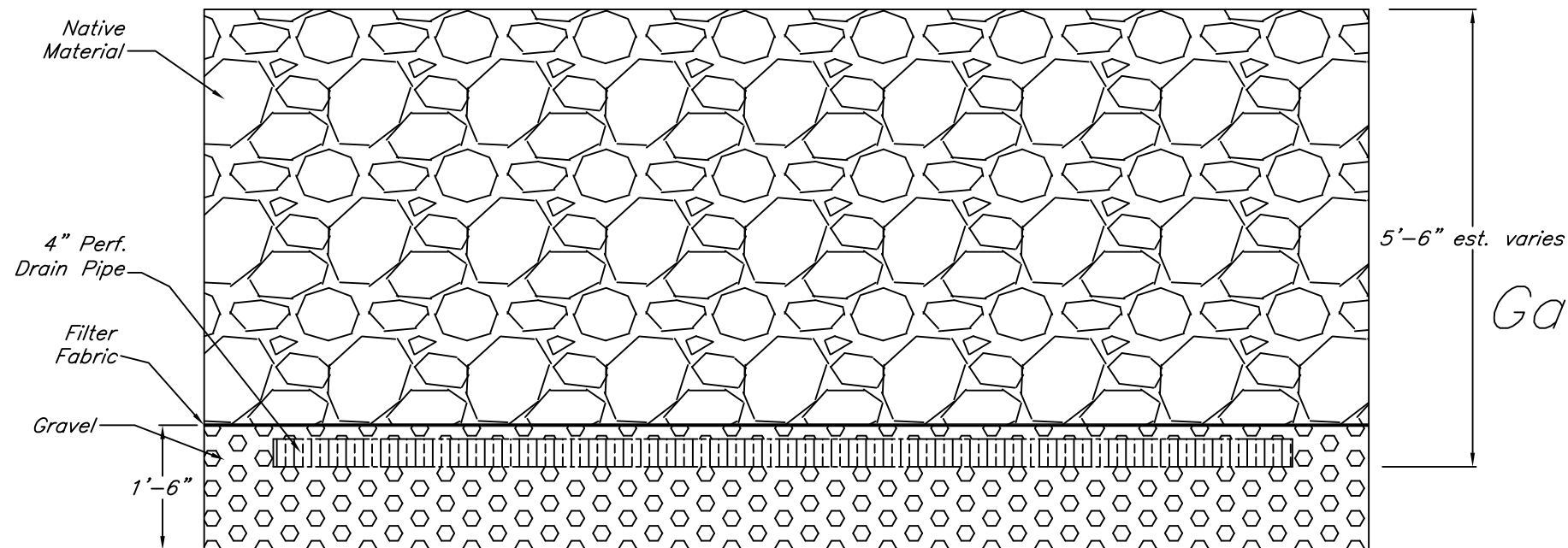


End View

Screen Box Area Details



Side View



Gallery Profile

FOR REVIEW

DATE	8/12
DESIGN	jaf
DRAWN	jaf
CHECKED	
APPROVED	
TITLE	

File: InfGalleries.dwg

FAZIO ENGINEERING
P.O. BOX 246
MILTON-FREEWATER, OR 98762
(541) 938-6084

DETAILS
Anspach Recharge
MILTON-FREEWATER, OR



PROJECT JOHN FAZIO

SHT 1 OF 1

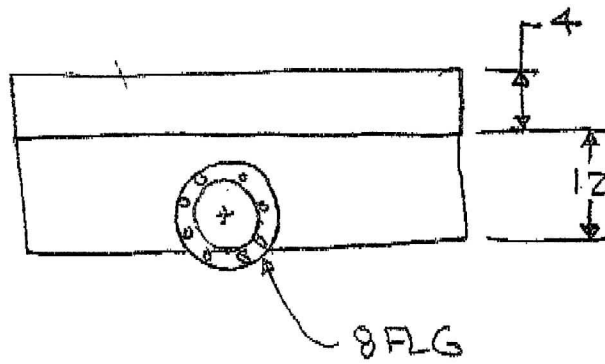
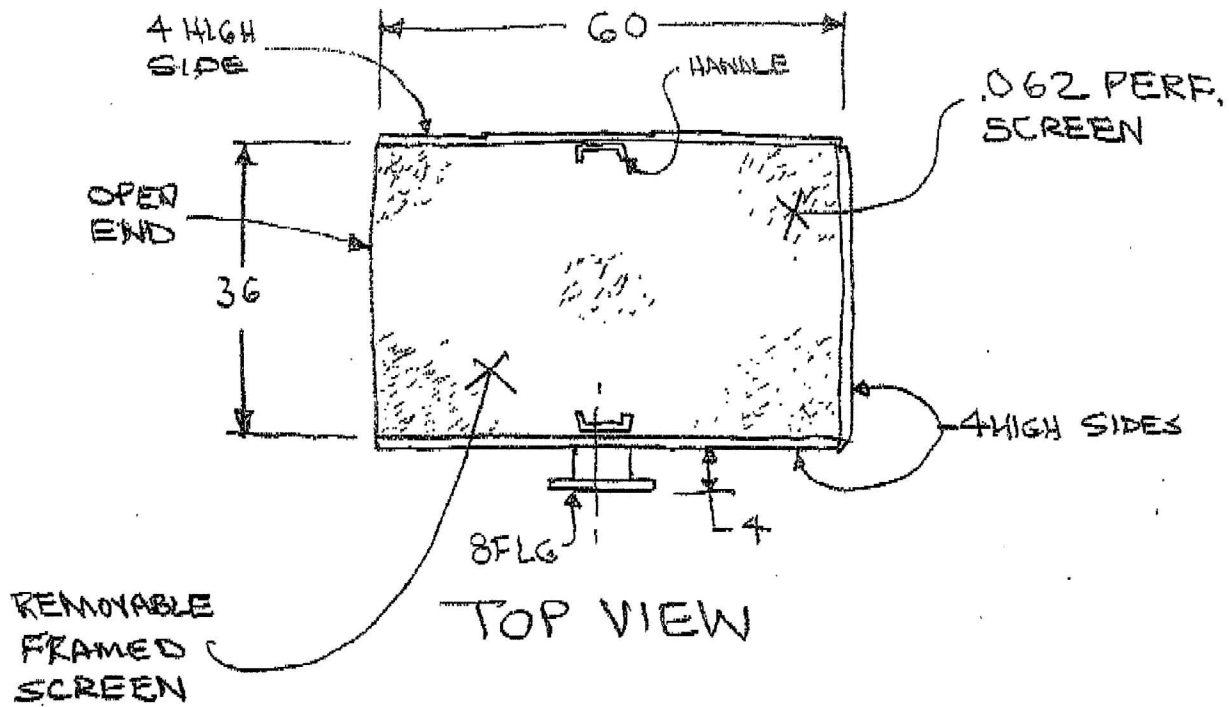
SCREEN BOX

DATE 4 SEPT 12

BY

B. B. B.

JOB NO. 2



SIDE VIEW

SOLVENT WELD

SUBMITTAL AND DATA SHEET

PERFORATED UNDERDRAIN PIPE : :

JM EAGLE™ PVC ASTM D3034 SOLVENT WELD SDR35 SEWER PIPE

JM EAGLE™ SOLVENT WELD SEWER PIPE CONFORMS TO SPECIFICATIONS PRIOR TO PERFORATION AND CELL CLASS 12454 OR 12364 AS DEFINED IN ASTM D1784

NOM. PIPE SIZE (IN)	O.D. (IN)	NOM. I.D. (IN)	MIN T. (IN)	APPROX. WEIGHT (LBS/FT)
4"	4.215	3.961	0.120	1.022
4" x 10' Perf	4.215	3.961	0.120	1.022
6"	6.275	5.893	0.180	2.285
6" x 10' Perf	6.275	5.893	0.180	2.285

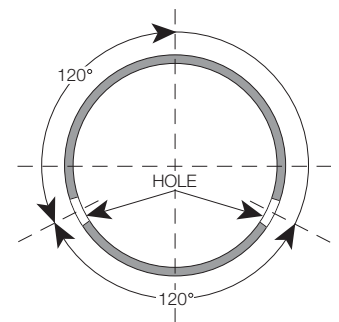
- :: Standard Color: Green, Standard length: 10' or 20' Overall, Belled End Only
- :: Standard perforations for pipe are two rows of holes 1/2" in diameter on 5" centers and 120° angle apart.
- Perforated pipe does not have ASTM designation on print line.

When using JM Eagle™ PVC ASTM D3034 Solvent Weld Sewer Pipe for septic tank fields, please install in accordance with ASTM D2321, and JM Eagle™ Publication JME-05B, "Gravity Sewer Installation Guide."

JM EAGLE™ PVC ASTM D2729 SOLVENT WELD DRAIN PIPE

JM EAGLE™ SOLVENT WELD DRAIN PIPE CONFORMS TO SPECIFICATIONS AND CELL CLASS 12454 OR 12164 AS DEFINED IN ASTM D1784

NOM. PIPE SIZE (IN)	O.D. (IN)	NOM. I.D. (IN)	MIN T. (IN)	APPROX. WEIGHT (LBS/FT)
3" Solid	3.250	3.102	0.070	0.465
3" Perf	3.250	3.102	0.070	0.465
4" Solid	4.215	4.056	0.075	0.648
4" Perf	4.215	4.056	0.075	0.648
6" Solid	6.275	6.063	0.100	1.300
6" Perf	6.275	6.063	0.100	1.300



- :: Standard Color: White, Standard length: 10' Overall, Belled End Only
- :: Standard perforations for pipe are two rows of holes 1/2" in diameter on 5" centers and 120° angle apart.
- Three perforation rows may be available.

When using JM Eagle™ PVC ASTM D2729 Solvent Weld Drain Pipe for septic tank fields, please install in accordance with ASTM F481, and JM Eagle™ Publication JME-05B, "Gravity Sewer Installation Guide."

* Prior to ordering or specifying, please consult JM Eagle™ for product and /or listing availability.

I.D. : Inside Diameter
 O.D. : Outside Diameter
 T. : Wall Thickness