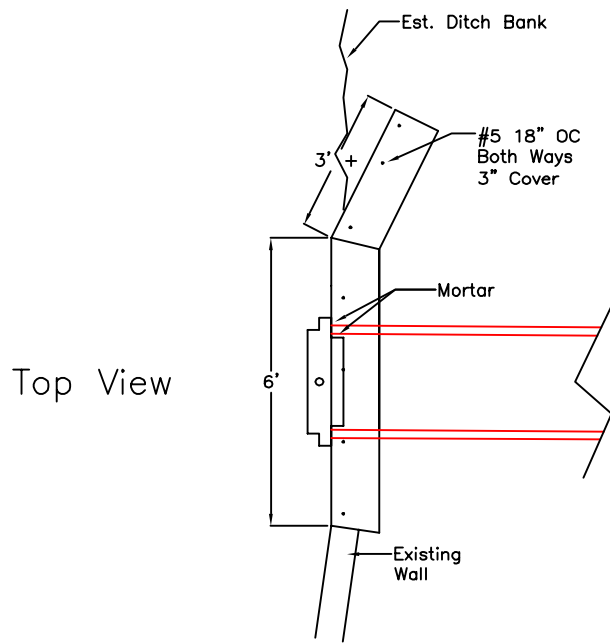
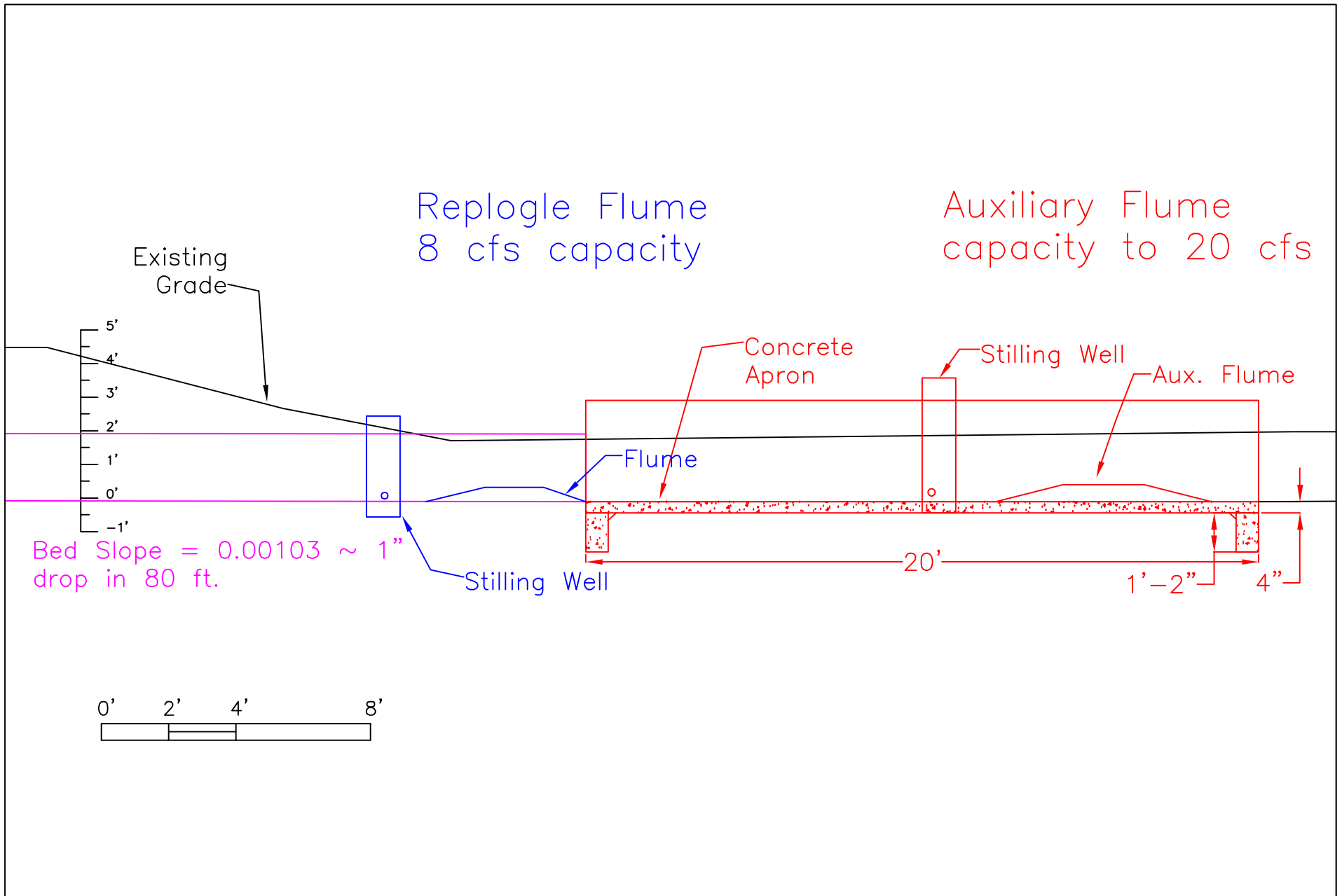


Side View



Top View

FAZIO ENGINEERING P.O. BOX 246 MILTON-FREEWATER, OR 98762 (541) 938-6084	PRELIMINARY LAYOUT DIVERSION HEADGATE LOCHER ROAD INFILTRATION SITE WALLA WALLA, WASHINGTON	DATE Dec. 7, 2004
		FILE LocherRoad
		SCALE 1" = 4'



FAZIO ENGINEERING
P.O. BOX 246
MILTON-FREEWATER, OR 98762
(541) 938-6084

PRELIMINARY LAYOUT
FLUME LAYOUT
LOCHER ROAD INFILTRATION SITE
WALLA WALLA, WASHINGTON

DATE
Dec. 30, 2004

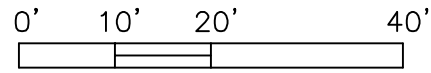
DESIGN BY
JAF

FILE
locherroad

PROJ. NO.
05-08

DWG NO.
FlumeLayout

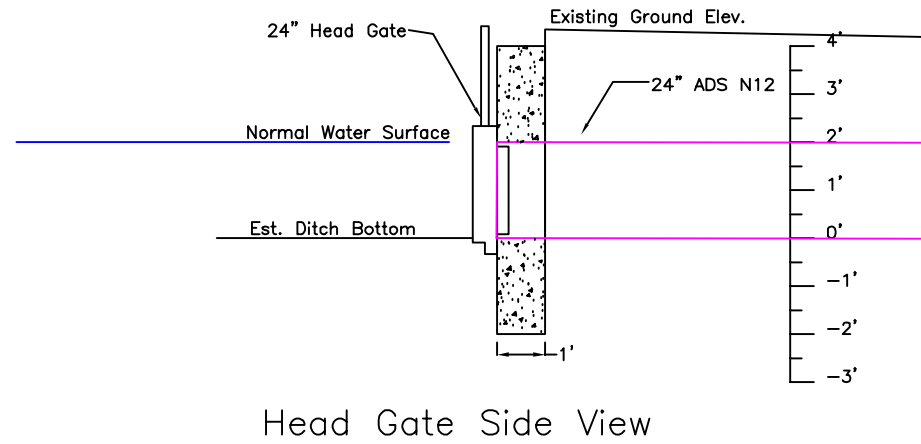
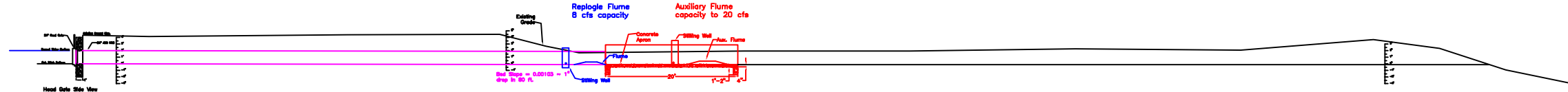
SCALE
1" = 4'



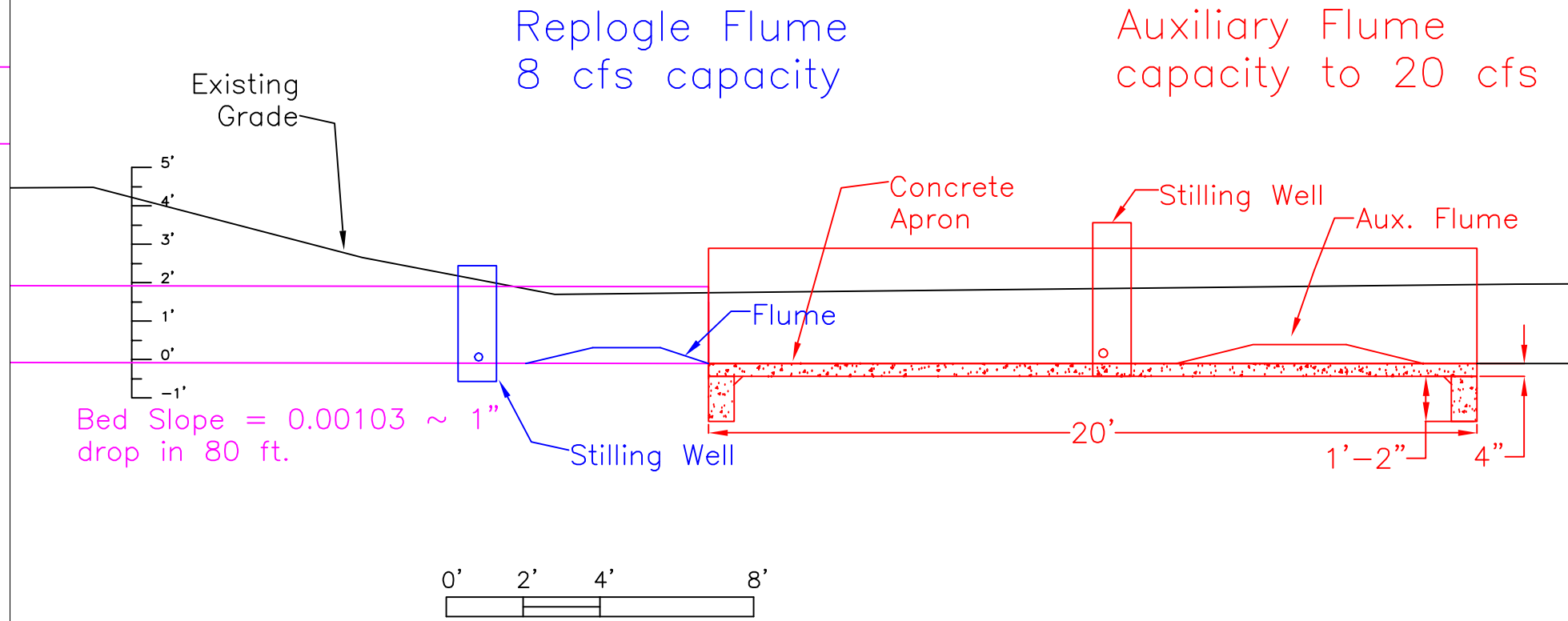
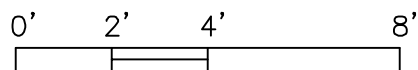
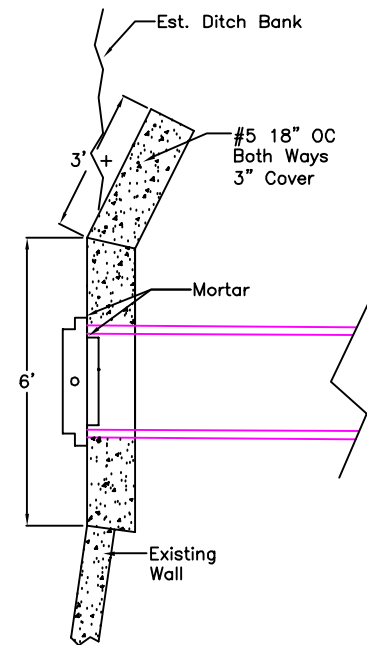
Ditch and Head Gate

Flume Location

Ditch and Outfall



Top View



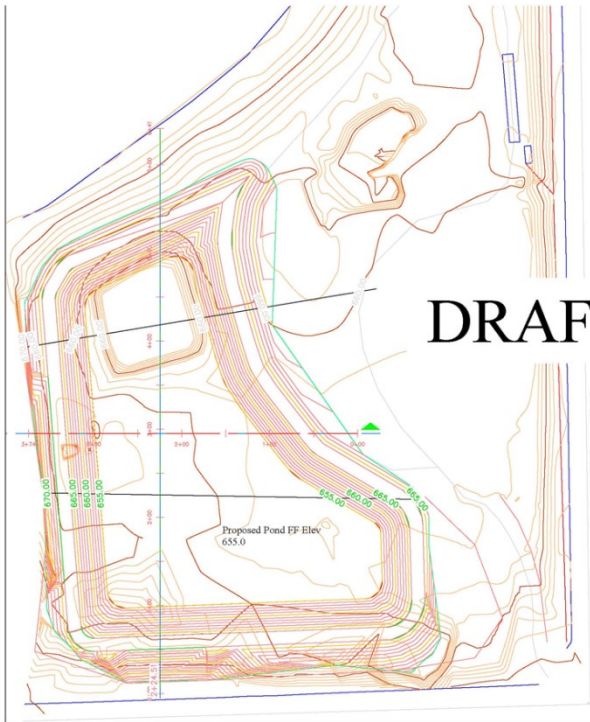
NO.	DATE	REVISION	BY

FAZIO ENGINEERING
P.O. BOX 246
MILTON-FREEWATER, OR 98762
(541) 938-6084

PRELIMINARY LAYOUT
DIVERSION AND FLUME
LOCHER ROAD INFILTRATION SITE
WALLA WALLA, WASHINGTON

DATE
Dec. 30, 2004
DESIGN BY
JAF
FILE
locherroad

PROJ. NO.
05-08
DWG NO.
Figure 2
SCALE
AS NOTED



NOTES:

- 1) Design constraints were the existing roadway and a capacity sufficient to accommodate 2-4 cfs of inflow from the existing inlet pond (outlet of pond estimated elev 658);
- 2) Area of the proposed pond bottom is 74,490 ft²;
- 3) Estimated capacity based upon the the 658 static elev. is 480,640 ft³;
- 4) Cut and fill slopes of the Proposed Pond are 3:1 and 4:1 respectively;



Pioneer Construction, Inc	
Project: Dixon Pit AR Recharge Project Recharge Pond 2011	
Date: Dec 12, 2011	Revisions:
Scale:	