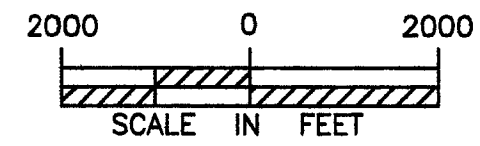
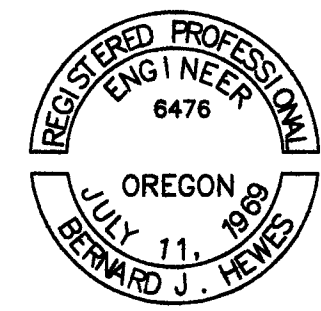


PRELIMINARY SUBJECT
TO REVISION



SECTION 27
TOWNSHIP 6N
RANGE 35E



EXPIRES 6/30/2013

DESIGNED	B. HEWES	DATE	9/12
CHECKED			
APPROVED			

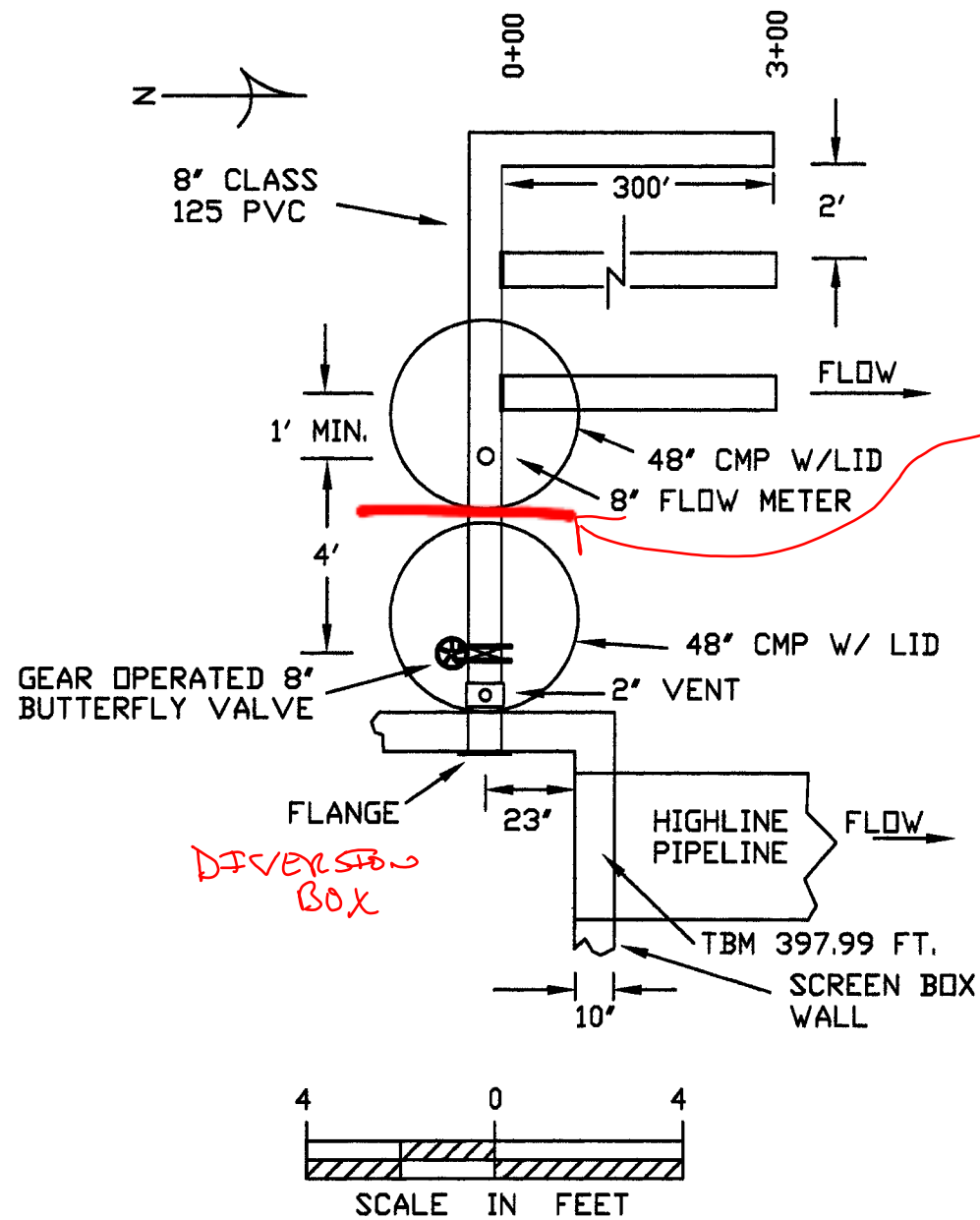
WWBWC/HBDC TRUMBO LANE RECHARGE
LOCATION MAP
UMATILLA COUNTY, OREGON
B H ENGINEERING

CADFILE
trumboloc

SHEET 1
OF 2

Bernard Hewes, ENG/4/2012 3-18 P:\trumboloc.dwg

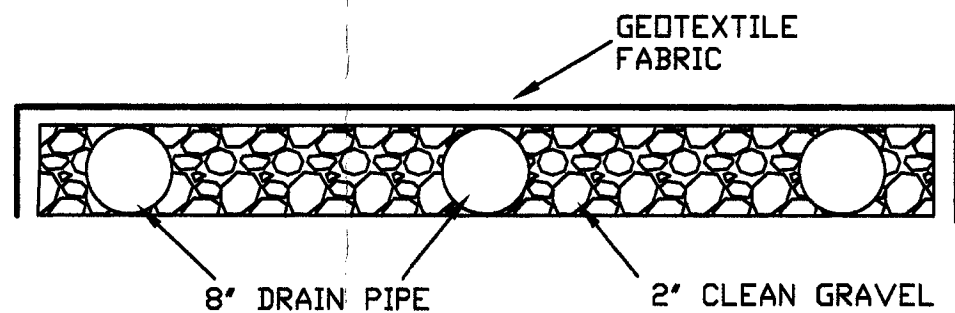
RECHARGE SYSTEM PLAN VIEW



NOTES

BOTTOM OF THE HOLE FOR THE 8" OUTLET PIPE IS 20" ABOVE THE FLOOR AND 23" FROM THE INSIDE OF THE NORTH WALL. MINIMUM DIAMETER OF THE HOLE IS 10". PLACE CAULK BETWEEN THE FLANGE AND THE WALL WHEN SETTING THE 8" PIPE. FORCE NON-SHRINK GROUT BETWEEN THE PIPE AND HOLE WALL. AFTER THE GROUT IS SET CLEAN UP ANY VOIDS WITH CAULKING COMPOUND. THE 8" RECHARGE PIPE CAN BE EITHER CORRUGATED ABS PERFORATED DRAIN PIPE OR SMOOTH WALL LEACH FIELD PIPE. INSTALL A WYE NEAR 0+00 AND 2+00 ON EACH LINE FOR A CLEAN OUT. PLACE A REMOVABLE CAP ON THE END OF EACH DRAIN LINE FOR CLEANING OUT.

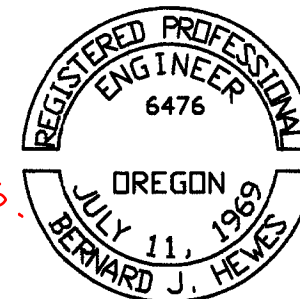
DRAIN PIPE CROSS SECTION ELEVATION VIEW



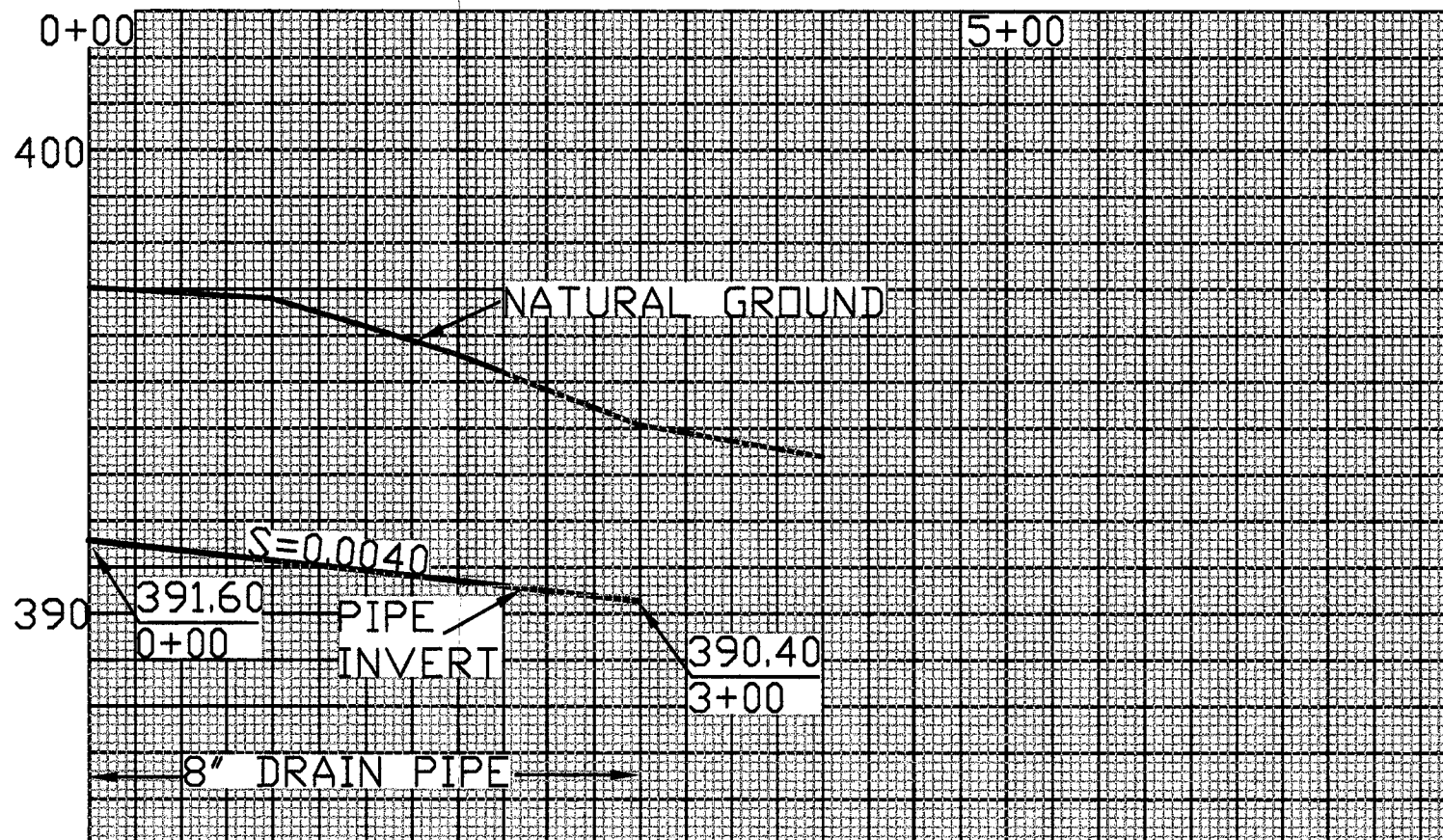
AWSON BAY WILL CUT HOLE IN THE DIVERSION BOX & WILL INSTALL PIPE & VALVE UP TO THE LINE INDICATED.

PRELIMINARY SUBJECT TO REVISION

CONTRACTOR WILL INSTALL THE REST OF THE PIPELINE, FLOWMETER & PERFORATED PIPES.



EXPIRES 6/30/2013



DATE 9/12
DESIGNED BY HEVES
PLOTTED
APPROVED

WUBWC/HBDC TRUMB LANE RECHARGE PLAN & PROFILE
MATIUA COUNTY OREGON

CAD FILE trumbopla
SHEET 2 OF 2